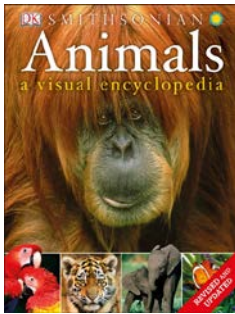
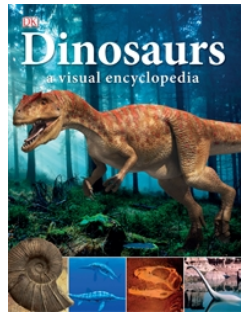


# DK Common Core State Standards Alignment

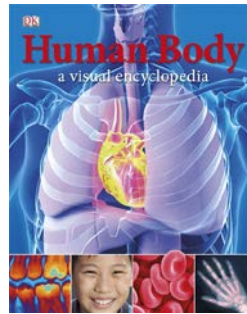
---



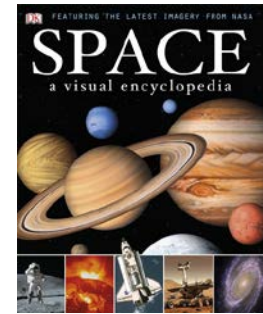
ISBN: 9780756691707



ISBN: 9780756682309



ISBN: 9780756693077



ISBN: 9780756662776

**CCSS.ELA-literacy.RI.5.1,2,3,4,5,7,8,9,10**

**CCSS.ELA-literacy.RI.6.1,2,3,4,5,6,7,9**

**CCSS.ELA-literacy.RI.7.1,4,5,9**

**CCSS.ELA-literacy.RI.8.2,3,4,5,7**

## Grade 5

### Key Ideas and Details

---

- **CCSS.ELA-Literacy.RI.5.1** Quote accurately from a text when explaining what the text says explicitly and when drawing inferences from the text.
- **CCSS.ELA-Literacy.RI.5.2** Determine two or more main ideas of a text and explain how they are supported by key details; summarize the text.
- **CCSS.ELA-Literacy.RI.5.3** Explain the relationships or interactions between two or more individuals, events, ideas, or concepts in a historical, scientific, or technical text based on specific information in the text.

### Craft and Structure

---

- **CCSS.ELA-Literacy.RI.5.4** Determine the meaning of general academic and domain-specific words and phrases in a text relevant to a grade 5 topic or subject area.
- **CCSS.ELA-Literacy.RI.5.5** Compare and contrast the overall structure (e.g., chronology, comparison, cause/effect, problem/solution) of events, ideas, concepts, or information in two or more texts.

### Integration of Knowledge and Ideas

---

- **CCSS.ELA-Literacy.RI.5.7** Draw on information from multiple print or digital sources, demonstrating the ability to locate an answer to a question quickly or to solve a problem efficiently.



**A WORLD OF IDEAS:  
SEE ALL THERE IS TO KNOW**



**US.DK.COM**

- **CCSS.ELA-Literacy.RI.5.8** Explain how an author uses reasons and evidence to support particular points in a text, identifying which reasons and evidence support which point(s).
- **CCSS.ELA-Literacy.RI.5.9** Integrate information from several texts on the same topic in order to write or speak about the subject knowledgeably.

## Range of Reading and Level of Text Complexity

---

- **CCSS.ELA-Literacy.RI.5.10** By the end of the year, read and comprehend informational texts, including history/social studies, science, and technical texts, at the high end of the grades 4–5 text complexity band independently and proficiently.

## Grade 6

### Key Ideas and Details

---

- **CCSS.ELA-Literacy.RI.6.1** Cite textual evidence to support analysis of what the text says explicitly as well as inferences drawn from the text.
- **CCSS.ELA-Literacy.RI.6.2** Determine a central idea of a text and how it is conveyed through particular details; provide a summary of the text distinct from personal opinions or judgments.
- **CCSS.ELA-Literacy.RI.6.3** Analyze in detail how a key individual, event, or idea is introduced, illustrated, and elaborated in a text (e.g., through examples or anecdotes).

### Craft and Structure

---

- **CCSS.ELA-Literacy.RI.6.4** Determine the meaning of words and phrases as they are used in a text, including figurative, connotative, and technical meanings.
- **CCSS.ELA-Literacy.RI.6.5** Analyze how a particular sentence, paragraph, chapter, or section fits into the overall structure of a text and contributes to the development of the ideas.
- **CCSS.ELA-Literacy.RI.6.6** Determine an author's point of view or purpose in a text and explain how it is conveyed in the text.

### Integration of Knowledge and Ideas

---

- **CCSS.ELA-Literacy.RI.6.7** Integrate information presented in different media or formats (e.g., visually, quantitatively) as well as in words to develop a coherent understanding of a topic or issue.
- **CCSS.ELA-Literacy.RI.6.9** Compare and contrast one author's presentation of events with that of another (e.g., a memoir written by and a biography on the same person).



**A WORLD OF IDEAS:**  
SEE ALL THERE IS TO KNOW



## Grade 7

### Key Ideas and Details

---

- **CCSS.ELA-Literacy.RI.7.1** Cite several pieces of textual evidence to support analysis of what the text says explicitly as well as inferences drawn from the text.

### Craft and Structure

---

- **CCSS.ELA-Literacy.RI.7.4** Determine the meaning of words and phrases as they are used in a text, including figurative, connotative, and technical meanings; analyze the impact of a specific word choice on meaning and tone.
- **CCSS.ELA-Literacy.RI.7.5** Analyze the structure an author uses to organize a text, including how the major sections contribute to the whole and to the development of the ideas.

### Integration of Knowledge and Ideas

---

- **CCSS.ELA-Literacy.RI.7.9** Analyze how two or more authors writing about the same topic shape their presentations of key information by emphasizing different evidence or advancing different interpretations of facts.

## Grade 8

### Key Ideas and Details

---

- **CCSS.ELA-Literacy.RI.8.2** Determine a central idea of a text and analyze its development over the course of the text, including its relationship to supporting ideas; provide an objective summary of the text.
- **CCSS.ELA-Literacy.RI.8.3** Analyze how a text makes connections among and distinctions between individuals, ideas, or events (e.g., through comparisons, analogies, or categories).

### Craft and Structure

---

- **CCSS.ELA-Literacy.RI.8.4** Determine the meaning of words and phrases as they are used in a text, including figurative, connotative, and technical meanings; analyze the impact of specific word choices on meaning and tone, including analogies or allusions to other texts.
- **CCSS.ELA-Literacy.RI.8.5** Analyze in detail the structure of a specific paragraph in a text, including the role of particular sentences in developing and refining a key concept.

### Integration of Knowledge and Ideas

---

- **CCSS.ELA-Literacy.RI.8.7** Evaluate the advantages and disadvantages of using different mediums (e.g., print or digital text, video, multimedia) to present a particular topic or idea.



**A WORLD OF IDEAS:**  
SEE ALL THERE IS TO KNOW

